



WALBEC GROUP

STATEMENT OF QUALIFICATIONS



Payne + Dolan

Northeast
Asphalt

Zenith Tech

Parisi

Premier
Concrete

C · R · M



ABOUT WALBEC GROUP

Founded in 1930, the Walbec Group is a vertically integrated family of heavy civil engineering, construction, and material supply companies. Together, we add value to our customer's projects through a variety of turnkey engineering and construction services. Our combined strengths and depth of resources, including over 1,800 skilled professionals, take pride in serving as true partners to our customers.

Our team members, located in 19 offices throughout the Midwest, provide collaborative cost-effective solutions to ensure every project is safely and successfully executed.



CORPORATE OFFICE
N3 W23650 Badinger Rd.
Waukesha, WI 53188

WALBEC GROUP FAMILY OF COMPANIES





OUR CAPABILITIES

- ✓ Agency approvals and permitting
- ✓ Aggregate supply & placement
- ✓ Asphalt design, rehabilitation & paving
- ✓ Bridge repair/construction
- ✓ Capital investment planning
- ✓ Concrete sitework
- ✓ Conditions assessments
- ✓ Constructibility, value engineering, & budgeting
- ✓ Construction administration/management
- ✓ Driven piles & deep foundations
- ✓ Earth retention systems
- ✓ Entitlement assistance & permitting
- ✓ Feasibility & environmental assessments
- ✓ Heavy highway structures
- ✓ Land surveying , planning & platting
- ✓ Large-scale residential site development
- ✓ Milling & pulverizing
- ✓ Pavement evaluation & planning
- ✓ Sewer & water design
- ✓ Shoreline & dock repair/construction
- ✓ Single, multi-span, or movable structure bridges
- ✓ Site grading & stabilization
- ✓ Site planning, design & civil engineering
- ✓ Steel & pre-cast erection
- ✓ Steel sheet piling
- ✓ Stormwater engineering & BMP design
- ✓ Structural analysis, engineering & detailing
- ✓ Structural & specialty concrete
- ✓ Subdivision & condominium plats
- ✓ Water and sewer utilities construction
- ✓ Utility coordination





OUR TEAM OF WALBEC EXPERTS



1000+ UNION CRAFTWORKER TEAM

- Carpenters
- Cement Finishers
- Laborers
- Operators



PROFESSIONAL MANAGEMENT TEAM

- Civil Engineers
- Construction Managers
- Engineering Technicians
- Land Resources Managers/
Planners
- Land Surveyors
- Materials Engineers
- Mining Engineers
- Project Managers
- Quality Technicians
- Structural Engineers
- Superintendents
- Transportation Engineers



DEDICATED IN-HOUSE SUPPORT TEAM

- Accounting
- Business Development/
Marketing
- Contract Specialists
- Environmental/
Sustainability
- Government/Community
Relations
- Human Resources
- Information Technology
- Legal
- Project Coordination
- Quality Control
- Risk Management
- Safety Management
- Scheduling



OUR EXPERTISE



When looking for a partner to help us with one of the busiest streets and several intersections on our campus, we selected the market leader and experienced Walbec Group team of Payne and Dolan. Their team provided the **best solution, added the most value, and ensured the safety of pedestrians** throughout the project. Challenged with a tough schedule and complex simultaneous underground infrastructure upgrades, the team executed the work with flexibility and patience. The result of this collaborative effort is a well-built “Complete Street” that integrates several intersections, off road bike lanes, multiple pedestrian crosswalks, and lanes for vehicular traffic. **Payne and Dolan was a true partner** to the Milwaukee Regional Medical Center and **I would strongly recommend them for any project.**

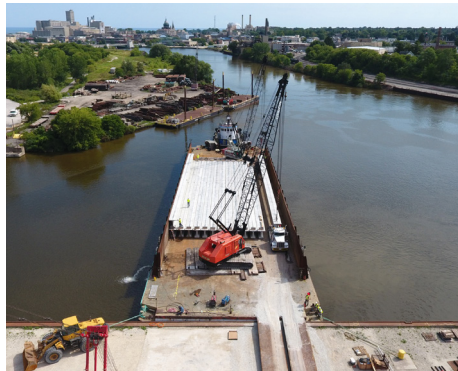
- **Mark Geronime, PE**, Vice President of Operations, Milwaukee Regional Medical Center



Milwaukee Regional Medical Center • Milwaukee, WI



Miller Park • Milwaukee, WI



Little Rapids Habitat Rehabilitation • Sault Ste. Marie, MI



WE Energies - A.J. Mihm/F.D. Kuester Power Plants
Marquette County, MI



Red Wing Eisenhower Bridge of Valor • Red Wing, MN



Green Bay Area Public Schools • Green Bay, WI



Michigan Street Vertical Lift Bridge • Milwaukee, WI



OUR EXPERTISE



Kohler Company • Kohler, WI



Lambeau Field • Green Bay, WI



Erin Hills Golf Course • Erin, WI



John Deere Horicon Works • Horicon, WI



General Mitchell International Airport • Milwaukee, WI



USH 12 - Madison Beltline • Madison, WI



Kilbourn Tunnel Rehabilitation • Milwaukee, WI



Summerfest • Milwaukee, WI



WALBEC
GROUP

WWW.WALBECGROUP.COM